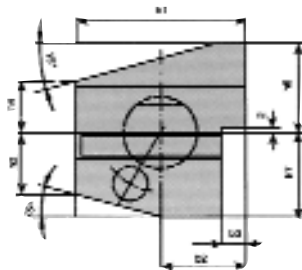
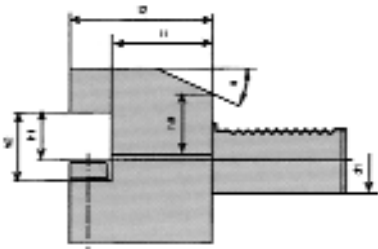


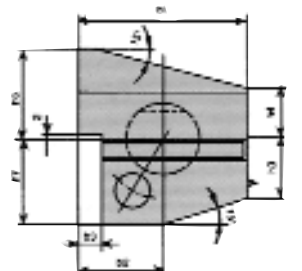
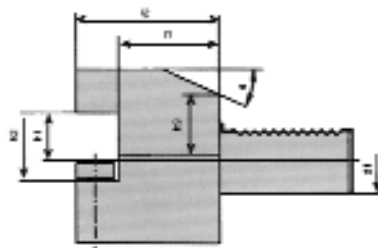
■ B3 Turning Tool Overhead Form B3 Right Hand-Short



Ordering No.	D1	B1	B2	B3	H1	H2	H3	H4	H6	H7	H9	L1	L2	a
VDI-16-B3	16	42	23	5	12	17	15	15	22	20	19	13	24	30°
VDI-16-B3-34	16	42	23	5	12	17	15	15	22	20	19	23	34	30°
VDI-20-B3	20	55	30	7	16	22	19	19	30	25	23	16	30	30°
VDI-20-B3-40	20	55	30	7	16	22	19	19	30	25	23	26	40	30°
VDI-30-B3	30	70	35	10	20	29	26	22	38	28	30	22	40	25°
VDI-30-B3-60	30	70	35	10	20	29	26	22	38	28	30	42	60	25°
VDI-40-B3	40	85	42.5	12.5	25	34	35	30	48	32.5	-	22	44	-
VDI-50-B3	50	100	50	16	32	41	42	35	60	35	-	30	55	-
VDI-60-B3	60	125	62.5	16	32	41	46	42.5	62.5	42.5	-	30	60	-

DIN.69880 Part 3
VDI 3425 Sheet 2

■ B4 Turning Tool Overhead Form B4 Left Hand-Short



Ordering No.	D1	B1	B2	B3	H1	H2	H3	H4	H6	H7	H9	L1	L2	a
VDI-16-B4	16	42	23	5	12	17	15	15	22	20	19	13	24	30°
VDI-16-B4-34	16	42	23	5	12	17	15	15	22	20	19	23	34	30°
VDI-20-B4	20	55	30	7	16	22	19	19	30	25	23	16	30	30°
VDI-20-B4-40	20	55	30	7	16	22	19	19	30	25	23	26	40	30°
VDI-30-B4	30	70	35	10	20	29	26	22	38	28	30	22	40	25°
VDI-30-B4-60	30	70	35	10	20	29	26	22	38	28	30	42	60	25°
VDI-40-B4	40	85	42.5	12.5	25	34	35	30	48	32.5	-	22	44	-
VDI-50-B4	50	100	50	16	32	41	42	35	60	35	-	30	55	-
VDI-60-B4	60	125	62.5	16	32	41	46	42.5	62.5	42.5	-	30	60	-

DIN.69880 Part 3
VDI 3425 Sheet 2